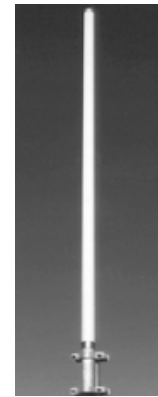


BAO Base Station Omni Antenna

BAO antenna have been designed with an E-plane radiation pattern with null fill, shaped to provide even signal strength throughout the coverage area.

The dipole assembly features high quality brass alloy radiating elements enclosed in a fiberglass weatherproof shroud.

The antenna has an aluminum support tube and top cap, The complete assembly is at DC ground for lighting.



Part No.	BAO2500-12N
Frequency range	2500~2700MHz
Bandwidth	200MHz
Gain	12dBi
VSWR	≤1.5:1
Polarization	Vertical
Horizontal Beamwidth	360°
Vertical Beamwidth	9°
Impedance	50Ω
Max Input Power	50W
Connector	N type
Size	Ø35 x1150mm

* Please specify frequency band when ordering

Eyecom company policy is one of continuing improvement, therefore we reserve the right to change this specification without notice